

Luis Campogónico

Cinco Cuadros Musicales

(sobre pinturas de Giorgio de Chirico)

- Cuna con Naranja
- El Caballero
- La mujer con la cuna sobre el sombrero
- Retrato
- Rongó

I CURA CON NABANJA

(anotaciones del 25-7 completadas el 22-8 de 1955)

duración: 2'45"

LRC

LENTO ED ESPRESSIVO

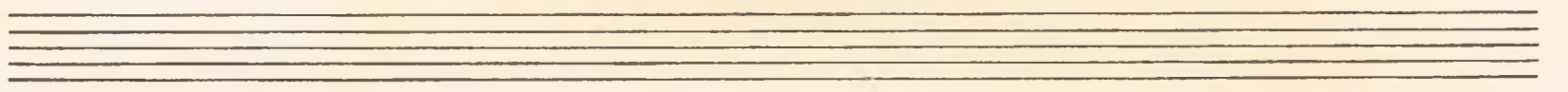
Handwritten musical notation for the first system. The top staff is in treble clef with a common time signature 'C'. It contains several measures of music, including a triplet of eighth notes. The bottom staff is in bass clef and contains a few notes, including a triplet of eighth notes. There are some markings above the notes, possibly indicating dynamics or phrasing.

Handwritten musical notation for the second system. The top staff is in treble clef and shows time signature changes from 2/4 to 3/4 and back to 2/4. It features a triplet of eighth notes and a slur over several notes. The bottom staff is in bass clef and contains a few notes, including a triplet of eighth notes. There are some markings above the notes, possibly indicating dynamics or phrasing.

Handwritten musical notation for the third system. The top staff is in treble clef and includes a guitar-like diagram with a '6' above it. Below the diagram is the marking 'rit. tempo'. The notation includes a slur over several notes and a time signature change to 3/4. The bottom staff is in bass clef and contains a few notes, including a triplet of eighth notes. There are some markings above the notes, possibly indicating dynamics or phrasing.

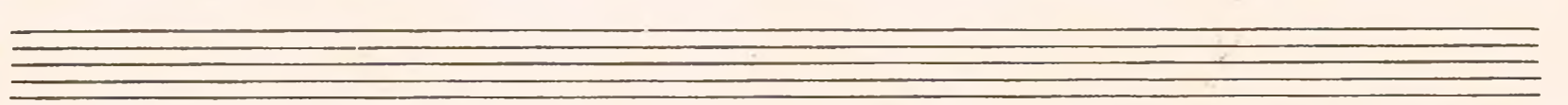
Handwritten musical notation for the fourth system. The top staff is in treble clef and shows time signature changes from 2/4 to 3/4 and back to 2/4. It features a triplet of eighth notes and a slur over several notes. The bottom staff is in bass clef and contains a few notes, including a triplet of eighth notes. There are some markings above the notes, possibly indicating dynamics or phrasing.

Handwritten musical score, first system. It consists of three staves. The top staff has a dynamic marking *f* and a fermata. The middle staff has a dynamic marking *pp* and a fermata. The bottom staff has a dynamic marking *pp* and a fermata. There are various musical notations including notes, rests, and accidentals.



Handwritten musical score, second system. It consists of three staves. The top staff has a dynamic marking *pp* and a fermata. The middle staff has a dynamic marking *pp* and a fermata. The bottom staff has a dynamic marking *pp* and a fermata. There are various musical notations including notes, rests, and accidentals.

Handwritten musical score, third system. It consists of three staves. The top staff has a dynamic marking *mf* and a fermata. The middle staff has a dynamic marking *mf* and a fermata. The bottom staff has a dynamic marking *mf* and a fermata. There are various musical notations including notes, rests, and accidentals.



Handwritten musical score, fourth system. It consists of three staves. The top staff has a dynamic marking *pp* and a fermata. The middle staff has a dynamic marking *pp* and a fermata. The bottom staff has a dynamic marking *pp* and a fermata. There are various musical notations including notes, rests, and accidentals.

II EL CABALLERO

(sobre una idea del 27. el 26 de agosto 1955)

duración: 2'25"

L3C1

Handwritten musical notation, first system. Treble clef, 2/4 time signature. The first two measures are whole rests. The third measure contains a bass clef. The melody in the treble clef consists of quarter notes: G4, A4, B4, C5, D5, E5, F5, G5. The bass line consists of eighth notes: G3, A3, B3, C4, D4, E4, F4, G4. There are various accidentals and dynamics markings throughout.

Handwritten musical notation, second system. Treble clef, 2/4 time signature. The first measure is a whole rest. The melody in the treble clef consists of quarter notes: G4, A4, B4, C5, D5, E5, F5, G5. The bass line consists of eighth notes: G3, A3, B3, C4, D4, E4, F4, G4. There are various accidentals and dynamics markings throughout.

Handwritten musical notation, third system. Treble clef, 2/4 time signature. The first measure is a whole rest. The melody in the treble clef consists of quarter notes: G4, A4, B4, C5, D5, E5, F5, G5. The bass line consists of eighth notes: G3, A3, B3, C4, D4, E4, F4, G4. There are various accidentals and dynamics markings throughout.

Handwritten musical notation, fourth system. Treble clef, 2/4 time signature. The first measure is a whole rest. The melody in the treble clef consists of quarter notes: G4, A4, B4, C5, D5, E5, F5, G5. The bass line consists of eighth notes: G3, A3, B3, C4, D4, E4, F4, G4. There are various accidentals and dynamics markings throughout.

Handwritten musical notation, fifth system. Treble clef, 2/4 time signature. The first measure is a whole rest. The melody in the treble clef consists of quarter notes: G4, A4, B4, C5, D5, E5, F5, G5. The bass line consists of eighth notes: G3, A3, B3, C4, D4, E4, F4, G4. There are various accidentals and dynamics markings throughout.

Handwritten musical notation, sixth system. Treble clef, 2/4 time signature. The first measure is a whole rest. The melody in the treble clef consists of quarter notes: G4, A4, B4, C5, D5, E5, F5, G5. The bass line consists of eighth notes: G3, A3, B3, C4, D4, E4, F4, G4. There are various accidentals and dynamics markings throughout.

pianissimo e crescendo
sempre staccato

8a. bassa

sino all' fine

III

LA MUJER CON LA LUNA SOBRE EL SOMBRERO

(anotaciones del 2-8, reacción del 25-8)
de 1955

duración: 3'30"

L3e1

ANDANTE

Handwritten musical notation for the first system, consisting of two staves. The top staff is in treble clef and the bottom in bass clef. The music is in 4/4 time and includes various notes, rests, and dynamic markings.

Handwritten musical notation for the second system, consisting of two staves. It includes a 'rit.' marking followed by a dashed line and a 'tempo' marking. The notation features complex rhythmic patterns and ties.

Handwritten musical notation for the third system, consisting of two staves. It includes a 'm.s.' marking. The notation continues with various notes and rests.

Handwritten musical notation for the fourth system, consisting of two staves. It includes a '2/4' time signature change. The notation features various notes and rests.

ADAGIO

Handwritten musical notation for the fifth system, consisting of two staves. It includes a 'pp' marking and a '3a' marking. The notation features complex rhythmic patterns and ties.

Handwritten musical notation for the sixth system, consisting of two staves. It includes a '3a' marking and a '3' marking. The notation features complex rhythmic patterns and ties.

Handwritten musical notation on a grand staff. The upper staff contains a treble clef and a 3/4 time signature. The lower staff contains a bass clef. The music features a series of chords and melodic lines, with some notes circled and marked with an 'x'. There are also some handwritten annotations like '3' and '4' above the staff.

Handwritten musical notation on a grand staff. The upper staff contains a treble clef and a 3/4 time signature. The lower staff contains a bass clef. The music features a series of chords and melodic lines, with some notes circled and marked with an 'x'. There are also some handwritten annotations like '3' and '4' above the staff.

Handwritten musical notation on a grand staff. The upper staff contains a treble clef and a 3/4 time signature. The lower staff contains a bass clef. The music features a series of chords and melodic lines, with some notes circled and marked with an 'x'. There are also some handwritten annotations like '3' and '4' above the staff.

Handwritten musical notation on a grand staff. The upper staff contains a treble clef and a 3/4 time signature. The lower staff contains a bass clef. The music features a series of chords and melodic lines, with some notes circled and marked with an 'x'. There are also some handwritten annotations like '3' and '4' above the staff.

IV

ENTORETRATO

(sobre una idea del 23, hecha el 25-8-1955)

duración: 1 minuto

L301

ALLEGRO GIOIOSO

Handwritten musical notation for the first system. The top staff is in treble clef with a 3/4 time signature. It contains a sequence of notes with a slur over a sixteenth-note run, a '6' above a sixteenth-note run, and another slur over a sixteenth-note run. The bottom staff is in bass clef with a 3/4 time signature and contains a few notes.

Handwritten musical notation for the second system. The top staff has a treble clef and contains a descending sixteenth-note run, followed by a slur over a sixteenth-note run, and then a series of notes with a slur. The bottom staff has a bass clef and contains a few notes. Dynamic markings include "rit... tempo" and "rit..." written in the middle of the system.

Handwritten musical notation for the third system. The top staff has a treble clef and contains a sixteenth-note run with a slur, followed by a sixteenth-note run with a slur, and then a descending sixteenth-note run with a slur. The bottom staff has a bass clef and contains a few notes. Dynamic markings include "tempo" and "forte" written in the middle of the system.

Handwritten musical notation for the fourth system. The top staff has a treble clef and contains a series of notes with a slur, followed by a descending sixteenth-note run with a slur. The bottom staff has a bass clef and contains a few notes.

Handwritten musical notation on two staves. The top staff begins with a treble clef, a key signature of two flats (B-flat and E-flat), and a dynamic marking of *pp*. It contains several measures of music, including a triplet of eighth notes and a sixteenth-note figure. The bottom staff is a bass clef with a few notes.

Handwritten musical notation on two staves. The top staff contains several measures of music with various ornaments, including a sixteenth-note figure with an accent (>) and a sixteenth-note figure with a '6' above it. The bottom staff is mostly empty.

Handwritten musical notation on two staves. The top staff contains several measures of music, including a sixteenth-note figure with an accent (>) and a sixteenth-note figure with a '6' above it. The bottom staff is mostly empty.

Handwritten musical notation on two staves. The top staff contains several measures of music, including a sixteenth-note figure with an accent (>) and a sixteenth-note figure with a '6' above it. The bottom staff contains several measures of music, including a sixteenth-note figure with an accent (>) and a sixteenth-note figure with a '6' above it. A *rit.* marking is present in the middle of the bottom staff.

V

RONDO

(Los primeros catorce compases, del 23, el resto el 25 agosto 1955)

duración: 3'10"

L30/

A series of 12 empty musical staves, each consisting of five horizontal lines, arranged vertically down the page. The staves are currently blank, with no musical notes or markings.

ANDANTE

Handwritten musical score for the first system, featuring a treble and bass clef with 4/4 time signature. The music consists of several measures with various note values and rests.

Handwritten musical score for the second system, featuring a treble and bass clef with 3/4 time signature. The music consists of several measures with various note values and rests.

Handwritten musical score for the third system, featuring a treble and bass clef with 4/4 time signature. The music consists of several measures with various note values and rests. A *rit.* marking is present in the middle of the system.

MENO MOSSO

Handwritten musical score for the fourth system, featuring a treble and bass clef with 4/4 time signature. The music consists of several measures with various note values and rests. A *8a. bassa* marking is present in the middle of the system. The tempo marking *tempo sempre piano* is written at the bottom right.

Handwritten musical score for the fifth system, featuring a treble and bass clef with 4/4 time signature. The music consists of several measures with various note values and rests. The tempo marking *espressivo e sempre mf* is written in the middle of the system.

Handwritten musical score for the sixth system, featuring a treble and bass clef with 4/4 time signature. The music consists of several measures with various note values and rests.

Handwritten musical notation for the first system. The upper staff is in treble clef and contains a melodic line with various intervals and accidentals. The lower staff is in bass clef and contains a chordal accompaniment with some slurs.

Handwritten musical notation for the second system. The upper staff is in treble clef and contains a melodic line. The lower staff is in bass clef and contains a chordal accompaniment. There are some handwritten markings like 'z' and 'y' in the bass staff.

Handwritten musical notation for the third system. The upper staff is in treble clef and contains a melodic line. The lower staff is in bass clef and contains a chordal accompaniment.

Handwritten musical notation for the fourth system. The upper staff is in treble clef and contains a melodic line. The lower staff is in bass clef and contains a chordal accompaniment. The system ends with a double bar line.

accelerando

MOLTO PIÙ MOSSO

Handwritten musical notation for the fifth system. The upper staff is in treble clef and contains a melodic line. The lower staff is in bass clef and contains a chordal accompaniment. There are some handwritten markings like 'y' and 'z' in the bass staff.

Handwritten musical notation for the sixth system. The upper staff is in treble clef and contains a melodic line. The lower staff is in bass clef and contains a chordal accompaniment. The system ends with a double bar line.

Handwritten musical notation, first system. Treble and bass staves with notes, rests, and dynamic markings like accents and slurs.

Handwritten musical notation, second system. Treble and bass staves with notes, rests, and dynamic markings like accents and slurs.

Handwritten musical notation, third system. Treble and bass staves. Treble staff has a crescendo hairpin and the word "piano". Bass staff has notes and rests.

Handwritten musical notation, fourth system. Treble and bass staves. Treble staff has notes and rests. Bass staff has notes and rests. Includes the marking "rit.".

Handwritten musical notation, fifth system. Treble and bass staves. Treble staff has notes and rests. Bass staff has notes and rests. Includes the marking "TEMPO PRIMO" and "rit.".

Handwritten musical notation, sixth system. Treble and bass staves. Treble staff has notes and rests. Bass staff has notes and rests. Includes the marking "ADAGIO" and "quasi recitativo".

Handwritten musical notation on a grand staff. The top staff is in bass clef and contains a sequence of chords and notes with accidentals (flats and sharps). The bottom staff is in bass clef and contains a few notes and rests.

Handwritten musical notation on a grand staff. The top staff is in treble clef and contains chords with accidentals. The bottom staff is in bass clef and contains a melodic line with various note values and accidentals.

Handwritten musical notation on a grand staff. The top staff is in treble clef and contains chords with accidentals. The bottom staff is in bass clef and contains chords with accidentals.

A series of seven empty grand staves, each consisting of two five-line staves.